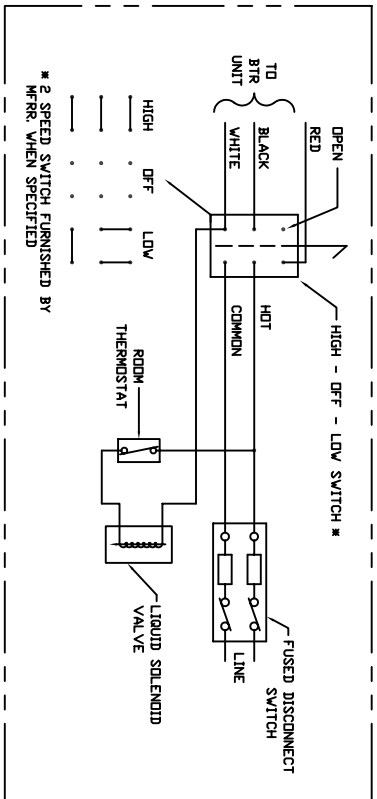
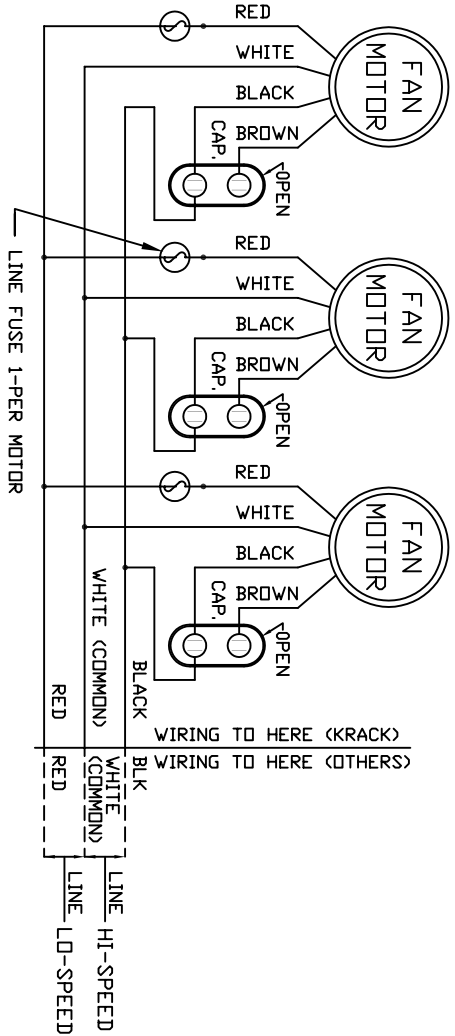


HP	FLA-EACH	FLA-TOTAL
1/6	115/1	115/1
	2.50	7.50
HP	FLA-EACH	FLA-TOTAL
1/6	230/1	230/1
	1.25	3.75

NOTES:

- VOLTAGE: 115-230/60/1
- MOTORS ARE PERMANENT-SPLIT CAPACITOR-4 LEAD TYPE CAPACITORS: 5 MFD, 370 VA
- FAN MOTORS:
 - HAVE BUILT-IN OVERLOAD PROTECTION,
 - FUSES SHOWN BETWEEN MOTORS, ARE FOR PROTECTION FROM EXCESSIVE CLOSED LOOP CURRENTS THAT COULD BE GENERATED BETWEEN PARALLEL CONNECTED MOTORS DUE TO TRANSFORMER ACTION IN THE TAPPED LOW SPEED WINDINGS,
 - FOR 2 SPEED APPLICATIONS WHERE FANS WILL RUN CONTINUOUSLY USE A SEPARATE MANUAL SWITCH FOR EACH UNIT.
 - FOR 2 SPEED APPLICATIONS ON MULTIPLE UNITS WHERE AUTOMATIC SWITCHING IS REQUIRED, OR WHERE FANS MUST BE SHUT OFF DURING DEFROST, USE A SEPARATE SWITCHING RELAY FOR EACH UNIT WITH ONE N.C. & ONE N.O. CONTACT BETWEEN HIGH & LOW SPEED WIRES.
 - WHENEVER POSSIBLE ALWAYS START MOTOR IN HIGH SPEED.
 - CONSULT FACTORY FOR SUGGESTED WIRING.



2 SPEED FAN CONTROL DIAGRAM
(MANUAL SWITCHING)
WIRING AND COMPONENTS
SHOWN BY OTHERS

WIRING BY OTHERS -----
WIRING BY KRACK _____

JOB NO.:		NO.	CHANGE DESCRIPTION	DATE	CK'D
CUSTOMER P.O.:		REVISIONS			
CUSTOMER NAME:					
JOB NAME:					
TAG UNIT:					
MODEL:					
ITEM NO.:					
NO. RECD:		DATE:			
SHEET OF		DRAWN:			
TOLERANCE: ±		REV.			