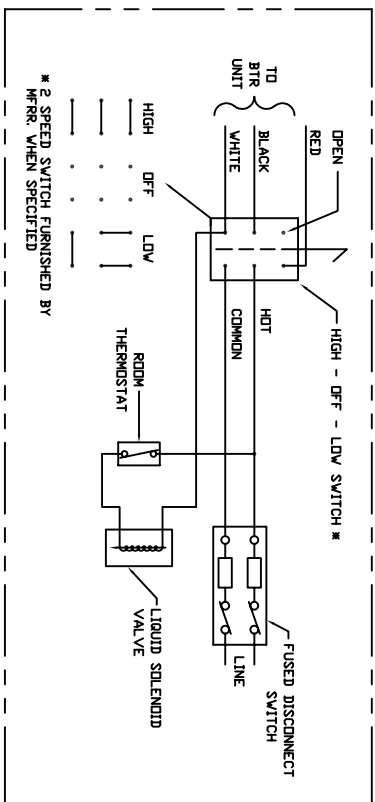


HP	FLA-EACH	FLA-TOTAL
HP	115/1	115/1
1/6	2.50	10.00
HP	FLA-EACH	FLA-TOTAL
HP	230/1	230/1
1/6	1.25	5.00

NOTES:

- VOLTAGE: 115-230/60/1
- MOTORS: ARE PERMANENT-SPLIT CAPACITOR-4 LEAD TYPE CAPACITORS: 5 MFD, 370 VA
- FAN MOTORS:
 - (1) HAVE BUILT-IN OVERLOAD PROTECTION.
 - (2) FUSES SHOWN BETWEEN MOTORS, ARE FOR PROTECTION FROM EXCESSIVE CLOSED LOOP CURRENTS THAT COULD BE GENERATED BETWEEN PARALLEL CONNECTED MOTORS DUE TO TRANSFORMER ACTION IN THE TAPPED LOW SPEED WINDINGS.
 - (3) FOR 2 SPEED APPLICATIONS WHERE FANS WILL RUN CONTINUOUSLY USE A SEPARATE MANUAL SWITCH FOR EACH UNIT.
 - (4) FOR 2 SPEED APPLICATIONS ON MULTIPLE UNITS WHERE AUTOMATIC SWITCHING IS REQUIRED, OR WHERE FANS MUST BE SHUT OFF DURING DEFROST, USE A SEPARATE SWITCHING RELAY FOR EACH UNIT WITH ONE N.C. & ONE N.C. CONTACT BETWEEN HIGH & LOW SPEED WIRES.
 - (5) WHENEVER POSSIBLE ALWAYS START MOTOR IN HIGH SPEED.
 - (6) CONSULT FACTORY FOR SUGGESTED WIRING.



2 SPEED FAN CONTROL DIAGRAM
(MANUAL SWITCHING)
WIRING AND COMPONENTS
SHOWN BY OTHERS

WIRING BY OTHERS -----
WIRING BY KRACK _____

NO.	CHANGE DESCRIPTION	DATE	CK'D

REV. _____

NO. _____ DATE _____ DRAWN: _____

SHEET _____ OF _____

TOLERANCE: ± 0.500