

Marley Replacement Parts

For Your Evapco Cooling Tower

MARLEY® 

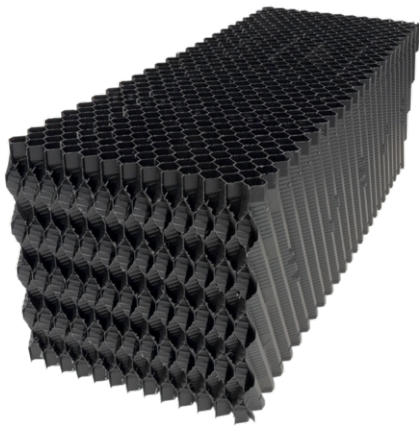


Marley Replacement Parts

FOR OTHER MANUFACTURERS' COOLING TOWERS

OUR MARLEY PARTS. YOUR EVAPCO TOWER.

Now Marley parts are available for your non-Marley cooling tower. When your maintenance and repair projects demand quality and reliability, count on Marley, engineered to fit, cooling tower components.



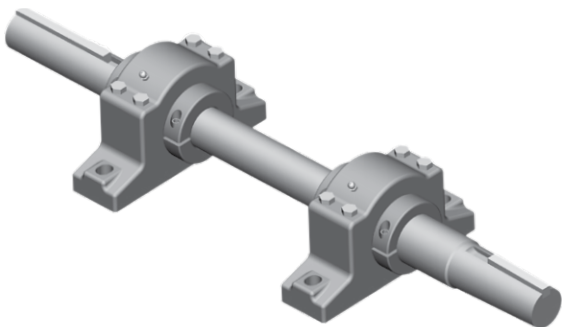
Marley MC120S™ Fill ①

Marley MC120 is a high-performing, bottom-supported film fill system designed for factory-assembled counterflow towers. It requires a minimum number of supports and is an ideal replacement for competitive products with similar fill sheet spacing.



Marley X7 Fan ②

The Marley X7 fan is designed for induced-draft cooling tower applications, offering distinct advantages over other fan designs.



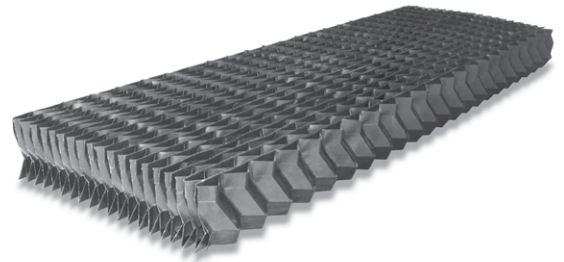
Bearings and Fan Shaft ③

Medium and heavy duty bearing replacements for vertical and horizontal mounting applications. Vertical and horizontal mounted fan shafts for direct replacements.



④ Marley XCEL TU12C Eliminators

The XCEL TU12C Eliminator is an advanced design that meets or exceeds today's demanding specifications for drift emissions without sacrificing fan horsepower.



⑤ Fan Belt

Replacement belts to keep your cooling tower in service.



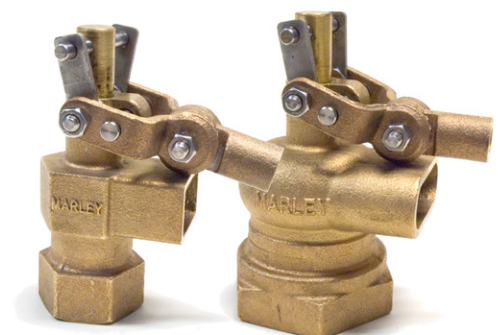
⑥ Sheave

Available in both aluminum and cast iron.



⑦ Marley Float Valves

Designed specifically for cooling tower duty, Marley makeup water float valves provide long life with little maintenance.



Marley Replacement Parts

FOR OTHER MANUFACTURERS' TOWERS

Marley mechanical system components are available for your non-Marley cooling tower.

Find your Marley technical expert at [spxcooling.com](https://www.spxcooling.com), 1-800-4-Marley or spxcooling@spx.com.

SPX COOLING TECHNOLOGIES, INC.

7401 WEST 129 STREET
OVERLAND PARK, KS 66213 USA
913 664 7400 | spxcooling@spx.com
[spxcooling.com](https://www.spxcooling.com)

MRP-2-21 | ISSUED 01/2021
COPYRIGHT © 2021 SPX CORPORATION

In the interest of technological progress, all products are subject to design and/or material change without notice.

